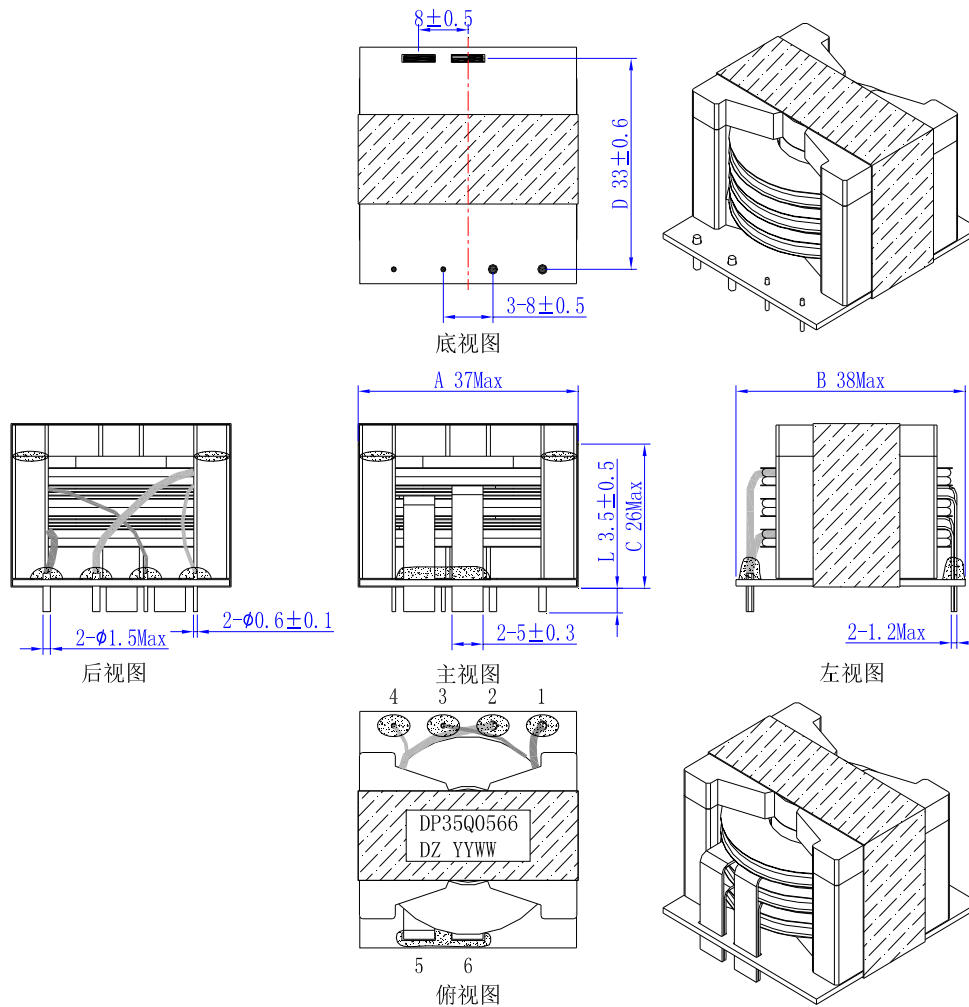


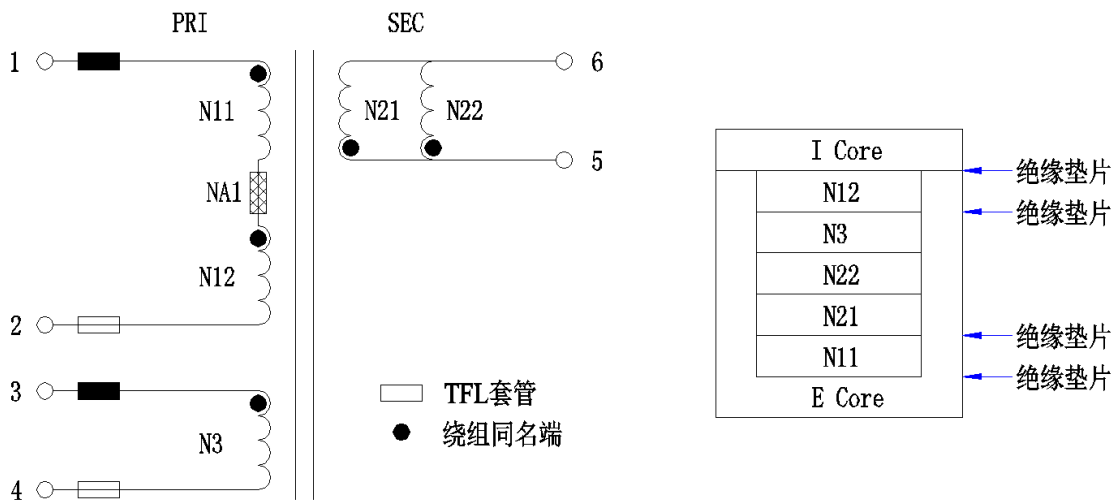
1. CONFIGURATION & DIMENSIONS



2. WINDING CONSTRUCTION

3. SCHEMATIC

(Use diagrams to show the location distribution of each winding, insulation layer, and isolation belt in the frame)





Winding	starting point	end	Wire diameter	Number of laps	adhesive tape	Winding method	Remark
N11	1	NA1	Φ0.1x80P 155°C	12		α-Line cake	Three-layer insulated wire
N21	5	6	T0.4x5x2Ts	4		Flat coil	Flat Line
N 22	5	6	T0.4x5x2Ts	4		Flat coil	Flat Line
N3	3	4	Φ0.6x1P 155°C	2		α-Line cake	Triple insulated wire
N12	NA1	2	Φ0.1x80P 155°C	12		α-Line cake	Three-layer insulated wire

4. Winding process requirements (refer to our drawing process requirements)

- 1) The transformer adopts the frameless winding process, the middle column is wrapped with an insulating paper tube, and the side columns are backed with a layer of glue;
- 2) The primary winding N11/N12 of the transformer uses a double-connected coil (with no disconnection in the middle), the starting wire of the coil is covered with a black TFL sleeve, the tail wire is covered with a transparent TFL sleeve, and the lead-out wire is fixed to the bottom plate with glue;
- 3) The transformer secondary winding N21/N22 is wound with a flat coil and placed between N11/N12, and the lead pins are glued and fixed on the bottom plate;
- 4) The core is fixed with 14mm tape wrapped with 3TS, and the core joint is fixed with glue;
- 5) The core and the bottom plate are fixed with 14mm tape wrapped with 2TS;
- 6) Product dipping requirements: Dipping and drying, the pins cannot be stained with varnish;
- 7) All materials must comply with RoHS environmental requirements and use lead-free environmentally friendly processes.



5. ELECTRIC CHARACTERICS

No.	name	Measuring end	Measurements	Test conditions	Standard test equipment
1	Inductance	1-2	184uH ± 5 %	100KHz 0.25V 25 °C	TH2816B
2	Leakage inductance	1-2	5uH MAX	1 00 KHz 0.25V25°C Short circuit 3/4/5/6 pins	
3	Dielectric strength	Primary - Secondary	3 00 0VAC	5mA 3S	Chroma19053
		Primary - Core	300 0VAC		
		Secondary - Core	50 0VAC		
4	Insulation resistance	Primary - Secondary	100MΩ MIN	DC 500V	
		Winding - core			
5	DC resistance	1-2	60 mΩ MAX	25±5 °C	YD2511

6. RELIABILITY TEST REQUIREMENT

(The supplier must complete the items required for the mandatory items, and the supplier can decide the other items at his/her own discretion, but the quality of the product must be ensured.)

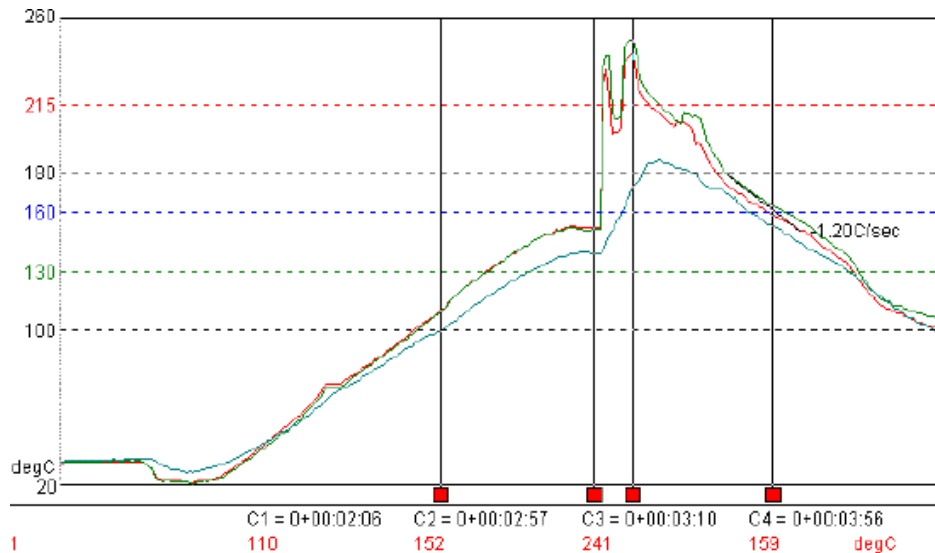
Test items	Required items	Test content	Remark (Remark)
Cold Operating Test		GB2423.1 Method Ad	
Core bonding tensile test	√		
Heat Operating Test		GB2423.2 Method Bd	
Cold Storage Test		GB2423.1 Method Ab	
Heat Storage Test		GB2423.2 Method Bb	
Steady Damp Heat Test		GB2423.3 Method Cb	
Circular Damp Heat Test		GB2423.4 Method Db	
Temperature Cycling Test	√	GB2423.22 Method Nb	
Temperature Shock Test	√	GB2423.22 Method Na	
Vibration Test	√	GB2423.10~15 Fc, Fdb	
Mechanical Shock Test (Bump)		GB2423.5 Method Eb	
Free Fall Test		GB2423.8 Method Ed	
Salt spray test		GJB 360A-96	
Soldering heat resistance test	√	GJB 360A-96	
Solderability Test		GJB 360A-96	
Mildew test		GJB1435-92	
High Temperature Step Stress Test		Enhancement Test Specifications	
Low Temperature Step Stress Test			
High-speed Thermal Cycling			
Limit Vibration Test			
Composite Stress			
Highly-Accelerated Temperature & Humidity Stress Test (HAST)			

7. Recommended welding conditions (SOLDERING CONDITION RECOMMENDED)

7.1 Welding method

The components are assembled by wave soldering .

7.2 Wave soldering method



Wave soldering temperature: 265°C±5°C; time: not less than 7 seconds.

Wave soldering preheating temperature: 100 to 160°C; time: not less than 10 seconds.

7.3 High temperature heat resistance:

The residence time in 260°C molten solder is not less than 10 seconds, and there is no quality problem

7.4 Rework temperature and time

Temperature: 350°C; Time: not less than 5 seconds.

7.5 Welding times:

The components can withstand no less than 5 soldering cycles.

8. PACKAGE AND SEMBLABLE REQUIREMENT

8.1 PACKAGE REQUIREMENT

- 1) The packaging box should indicate the product model, name, quantity, production date, manufacturer name and factory inspection stamp;
- 2) After the goods arrive at the customer, the seal of the packaging box should be intact, and the box body should not be damaged or cracked;
- 3) The inductor is packed in wooden boxes or other materials for easy disassembly, and is surrounded by soft materials;

8.2 Appearance (SEMBLABLE REQUIREMENT)

- 1) The product should have a certificate of conformity and a scratch-resistant and waterproof label, and the model and specifications should be indicated;



2) The product appearance should be neat and tidy, without damage or scratches;

8.3 TEST REQUIREMENT

1) All products must be tested for electrical performance and dielectric strength during production; there should be a 100% electrical performance certificate or test report in the box;

2) Before the product is shipped, it must be sampled and inspected according to the national industry standards in accordance with the letter of accreditation. After passing the inspection, a factory inspection report will be issued, recording the sampling test data, and a copy will be placed in the tail box of each batch of packaging; the inspection report must indicate that 100 % of the withstand voltage test has passed. Note: Batches are shipped according to the order number.

9. MATERIAL LIST

ITEM	TYPE	MATERLAL	SPEC		MANUFACTUR E	UL NO.	RoHS
			°C	UL94			
Magnetic core	PQI35/21	LP10A	/	/	New Kangda	/	Y
		DMR96A	/	/	DMEGC	/	Y
		KF9	/	/	Lianfeng	/	Y
		Equivalence	/	/	/	/	Y
Flat Line	T0.4x5mm	xEI /AIW/220	220	/	Youfaun	E343483	Y
		SFT-EI/AIWJ	220	/	Well Ascent	E318511	Y
		@*xEI/AIW 220	220	/	Suntek	E234867	Y
		Q(ZY/XY)-x/220	220	/	Tongling Jinda	E223994	Y
Triple insulated wire	Φ0.1x80P Φ0.6mm	E&B-XXXF	155	/	Guangding	E315265	Y
		FLW- F	155	/	Yusheng	E332529	Y
		TIW-F	155	/	Dongju	E488352	Y
Epoxy board	37 x 35 X T1.2 mm	FR-4	130	V0	Kingboard	E123995	Y
Poly paper	T0.13mm	Nomex410	220	/	DuPont	E34739	Y
adhesive tape	0.055mm 0.11mm	PF* (d)(g)	180	/	Jingjiang Yahua	E165111	Y
		1K7170	220	/	P.LEO	E126174	Y
		JY25-A(b)	130	/	Jingjiang Jingyi	E246950	Y
casing	TFL-15 TFL-19	CB-TT-L	200	VW-1	Changyuan	E180908	Y
		TF	200	VW-1	Dongju	E478618	Y
Epoxy glue	E-500 (XX) 3300A -1 /B -1	Epoxy	130	/	Dongguan Eatto	E218090	Y
	H907-H ##	Epoxy	130	/	Dongguan Hua Chuang	E304477	Y
	EP3189S(##)	Epoxy	130	/	Hengerlang	E475498	Y
Varnish	V1630 V1630FS	/	155	/	Elantas	E314793	Y
	T-4260(a), ET-90(a)	/	155	/	Suzhou Taihu	E228349	Y
	WP-2952F-2G	/	155	/	Resonac	E72979	Y